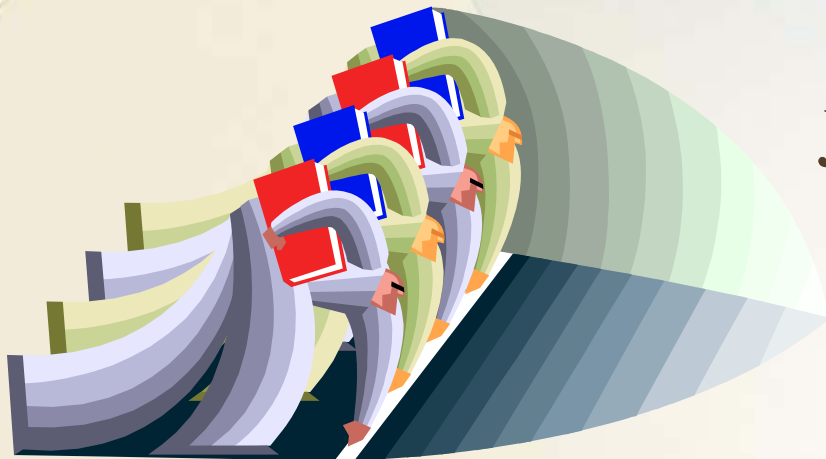


OFFICE OF PROVIDER MANAGEMENT

FY 2012 Performance Based Contracting Measures and GA + SCORE Data Collection

July 24, 2011

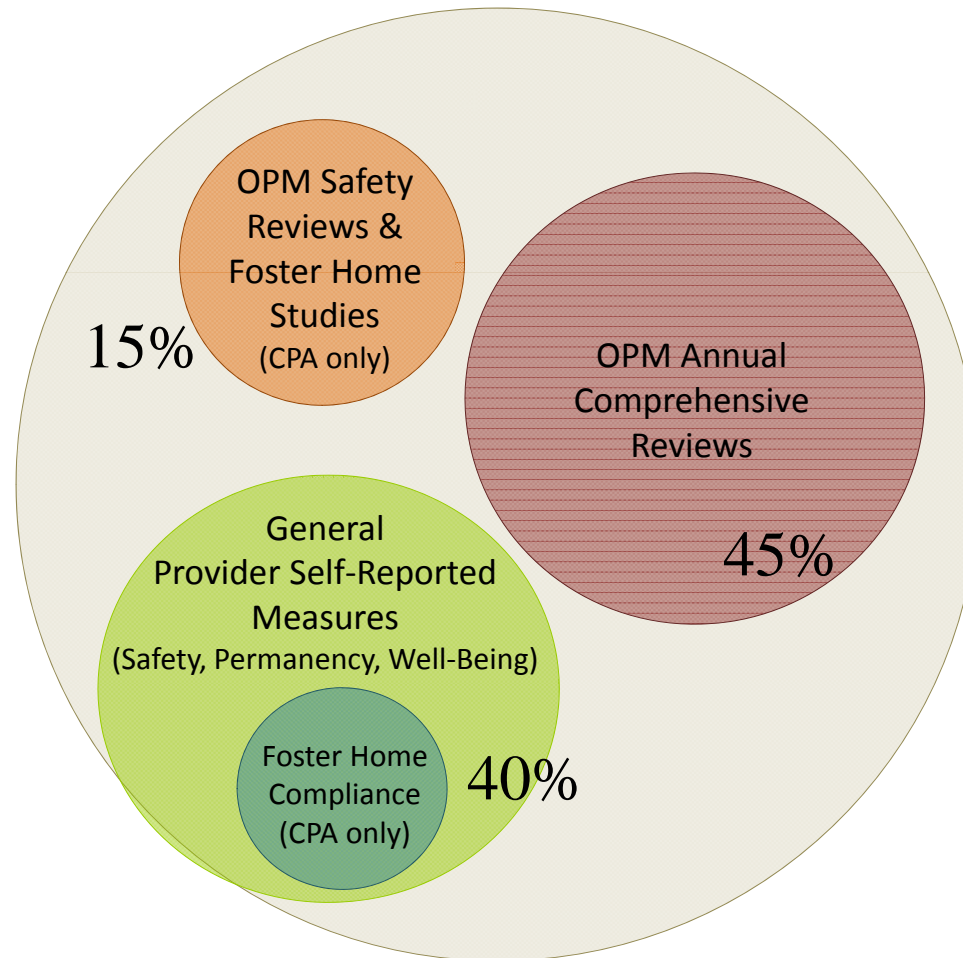


Ready, Set, Go!

FY 2012 PBC & GA + Score Overview Agenda

- ❑ Welcome
- ❑ FY 2012 PBC Measures
- ❑ Foster Home Approval Standards
- ❑ Other GA + Score Data Collection
- ❑ GA + Score Screen Review
- ❑ Q & A

FY 2012 Performance Based Scoring



Points Breakdown



| | Source | Safety | Well-Being | Permanency | Total Weight for this Data Source |
|----------------------|---|---------------|------------|------------|-----------------------------------|
| OPM Monitoring | Annual Comprehensive Visit | 15 pts | 15 pts | 15 pts | 45 pts |
| | Safety Reviews (& Foster Home Evaluations for CPAs) | 15 pts N/A | | N/A | 15 pts |
| General PBC Measures | Provider Self-Reporting (incl. Foster Home Compliance, for CPAs) & GA SHINES Data | 10 pts | 15 pts | 15pts | 40 pts |
| | Total | | | | 100 pts |



**GA SHINES must be used to document
ECЕМ, Sibling, Father, Mother and/or
Other Permanency Adult contacts.**

OPM Monitoring Results



| OPM Monitoring Reviews | CCI Weight | CPA Weight |
|--|------------|------------|
| Annual Comprehensive Review – provider results on the OPM annual comprehensive review on Safety, Permanency and Well-Being compliance to Minimum Standards and contractual obligations. | 45% | 45% |
| Safety Reviews / FH Study Review Results | 15% | 15% |

Safety Measures



| Safety Measures | CCI Weight | CPA Weight |
|--|------------|------------|
| Incidence of Maltreatment — percent of children who have substantiated CPS investigations; including informational display of--# CPS reports , screen outs, unsubstantiated complaints and current active investigations. | 4% | 4% |
| Staff Training -percent of staff (case support and supervisory) employed for at least 30 days in a quarter who complete a training from options provided by DFCS. | 5% | 5% |
| Foster Home Full Approval Compliance -percent of foster homes in full approval status. | N/A | 5% |

SAFETY: Staff Training



Name: The Problem of Youth Who Run from Residential Care

Materials Location: <http://www.nrcpfc.org/teleconferences/04-21-10.html>

Type: Archived Podcast

Source: National Resource Center for Permanency and Family Connections

Length: 1 Hour and 20 Minutes

Evaluation: Post Test

Description: Discussion lead by from researchers at The University of Illinois at Chicago regarding youth in residential care in Illinois who ran from placement . The podcast covers reasons why youth ran, ways Illinois providers addressed runaway behavior and a risk assessment tool to help predict and ultimately prevent runaway behavior.

Recommended For: Direct Care Workers and Human Services Professionals

Name: Holidays, Celebrations and Traumatically Bereaved Children

Materials Location: <http://learn.nctsn.org/>

Type: Archived Webcast

Source: The National Child Traumatic Stress Network

Length: 1 Hour and 27 Minutes

Evaluation: Post Test

Description: Understanding how identify, anticipate and prepare for dates, holidays or other reminders that may trigger grief responses in youth.

Recommended For: Direct Care Workers and Human Services Professionals

SAFETY: Staff Training



Name: Digital Stories

Materials Location: <http://www.hunter.cuny.edu/socwork/nrcfcpp/pass/digital-stories/index.htm>

Type: Five Videos (Sasha Charles, Felicia Devine, Leslie Fuller, Matthew Rodriguez and Katie Wyland)

Source: National Resource Center for Permanency and Family Connections

Length: 30 Minutes

Evaluation: Discussion Questions

Description: First person stories of youth and workers from the foster care system.

Recommended For: Direct Care Workers, Human Services Professionals, Case Support Workers and Case Support Supervisors

Name: RBWO Behavior Management Standards

Materials Location: <http://www.gascore.com>

Type: Archived Webcast

Source: DFCS, Office of Provider Management

Length: 90 Minutes

Evaluation: Post Test

Description: Review of Taylor v Ledbetter Consent Decree and other RBWO Standards related to behavior management.

Recommended For: Direct Care Workers, Human Services Professionals, Case Support Workers and Case Support Supervisors

SAFETY: Staff Training



Name: DFCS Safety Practice Framework

Materials Location: <http://www.gascore.com>

Type: Archived Training (3-Part Video Presentation by Barry Salowitz)

Source: DFCS

Length: 151 Minutes

Evaluation: Post Test

Description: Review of the Safety Practice Framework which is the basis for how DFCS assesses risk and safety for intact families, CPS investigations and while children and youth are in any type of foster care placement.

Recommended For: Human Services Professionals, Case Support Workers and Case Support Supervisors

Name: Documentation of Every Child Every Month Visits

Materials Location: <http://www.gascore.com>

Type: Archived Webcast

Source: DFCS, Office of Provider Management

Length: xx Minutes

Evaluation: Post Test

Description: Review of preparing for and executing ECEM visits and effectively documenting the visit into the SHINES portal.

Recommended For: Human Services Professionals, Case Support Workers and Case Support Supervisors

SAFETY: Staff Training



Name: Developmental Perspectives on Sexual Behavior in Children and Adolescents

Materials Location: <http://www.nationalcac.org>

Type: Archived Webcast

Source: The National Children's Advocacy Center

Length: 76 Minutes

Evaluation: Post Test

Description: This course discusses sexual behavior in children ages 2-12 and helps the student understand that a number of child sexual behaviors can be normal. In addition, the course presents information about sexual behavior that may be related to sexual abuse, or to other variables in the child's life. Finally, the course presents information on why children might develop sexual behavior problems along with guidelines for treatment of these children.

Recommended For: Direct Care Workers, Human Services Professionals, Case Support Workers and Case Support Supervisors

SAFETY: IL and TLP Staff Training



Independent and Transitional Living Programs

Name: Holidays, Celebrations and Traumatically Bereaved Children

Materials Location: <http://learn.nctsn.org/>

Type: Archived Webcast

Source: The National Child Traumatic Stress Network

Length: 1 Hour and 27 Minutes

Evaluation: Post Test

Description: Understanding how identify, anticipate and prepare for dates, holidays or other reminders that may trigger grief responses in youth.

Name: Digital Stories

Materials Location: <http://www.hunter.cuny.edu/socwork/nrcfcpp/pass/digital-stories/index.htm>

Type: Five Videos (Sasha Charles, Felicia Devine, Leslie Fuller, Matthew Rodriquez and Katie Wyland)

Source: National Resource Center for Permanency and Family Connections

Length: 30 Minutes

Evaluation: Discussion Questions

Description: First person stories of youth and workers from the foster care system.

.

SAFETY: IL and TLP Staff Training



Name: Youth Perspectives on Permanency

Materials Location: <http://64.78.47.133/training/subjectList.cfm?subjectID=5>

Type: Archived Webcast

Source: Foster Club

Length: 1 Hour

Evaluation: Post Test

Description: A project of the California Permanency for Youth Project discussing the importance of the voice of youth in permanency work

Name: It's My Life

Materials Location: <http://www.gascore.com>

Type: Self-Study

Source: National Resource Center for Permanency and Family Connections

Length: 1 Hour

Evaluation: Discussion Questions

Description: A holistic approach for those who play a role in how young adults envision and achieve success in adulthood

Permanency Measures



| Permanency Measures | CCI Weight | CPA Weight |
|---|------------|------------|
| Placement Disruptions —percent of children remaining in provider placement without a disruption (certain disruption causes and DFCS initiated disruptions will not be counted against the provider). | 7% | 4% |
| Permanency Contacts - percent of children receiving provider supported contact between child and parent and child and a sibling which support the DFCS permanency plan. Contacts are documented via Provider Portal into SHINES. | 5% | 5% |

Discharge To...



Child Caring Institution

- ☐ Step-Down to A Less Restrictive Placement
- ☐ Step-Down to A Foster Home
- ☐ Step-Up to A More Appropriate Yet More Restrictive Placement
- ☐ Emancipation
- ☐ To A PRTF
- ☐ To A Permanency Placement
- ☐ **Placement Disruption**

Child Placing Agency

- ☐ Step-Up to A CCI
- ☐ To A PRTF
- ☐ Emancipation
- ☐ To A Permanency Placement
- ☐ **Placement Disruption**

Placement Disruption

- ☐ Child's Behavior Disruptive
- ☐ Child Did Not Fit Into Milieu
- ☐ Child/Caregiver Relational Issues
- ☐ DFCS Case Manager Initiated Move
- ☐ Caregiver Requested Removal
- ☐ Caregiver Requested Home Closure
- ☐ Unmanageable Behaviors
- ☐ Unpredicted/Unexpected Needs (behavioral, medical, emotional)
- ☐ Unknown Medical Issues Surfaced
- ☐ Funding Denied

- ☐ Caregiver Violated Policy and Not Amenable To Change
- ☐ Caregiver Health issues
- ☐ Foster Home Out of Compliance
- ☐ Child on Run Status
- ☐ Child Detained at RYDC
- ☐ CPS Allegations
- ☐ Youth Pregnancy
- ☐ Lateral Foster Home Move within Agency
- ☐ Child Purposefully Disrupted Placement

Well-Being Measures



| Well-Being Measures | CCI Weight | CPA Weight |
|---|------------|------------|
| EPSDT Medical Visits —percent of children who receive the minimum number of health screenings based on the periodicity schedule. (Due visits are accomplished within 90 days of placement for youth ages 6 and up and within 30 days for children younger than 6 years.) | 4% | 4% |
| EPSDT Dental Visits —percent of children age 3 or older who receive two dental screening annually- (Due visits are accomplished within 90 days of placement) | 4% | 4% |
| Academic Supports —percent of children enrolled in K-12 who receive at least two academic supports per month. | 5% | 4% |
| Provider Every Child Every Month Visit - percent of children with whom the provider makes a purposefully monthly contact and documents it via the Provider Portal into SHINES. | 5% | 5% |



- **Caregiver advocacy with teacher or other school official**
- **Staff advocacy with teacher or other school official**
- **Caregiver educational surrogate training**
- **Community educational enrichment activity**
- **IEP Meeting**
- **In-home educational enrichment activity**
- **Parent-teacher conference**
- **PTA Attendance**
- **Tutoring session**
- **Other type school meeting, conference, or staffing**

Academic Support Options

Bonus Measures



| Bonus Credits | CCIs | CPAs |
|--|----------|----------|
| Father Engagement — percent of children who receive provider supported contacts with their father's who have a DFCS case plan. Contacts are documented via the Provider Portal into SHINES. | Up to 5% | Up to 5% |
| EPSDT Medical Visits –percent of visits completed early (within 60 days for youth ages 6 and older and within 15 days for children under 6 years) | Up to 2% | Up to 2% |
| EPSDT Dental Visits –percent of visits completed early (within 60 days) | Up to 2% | Up to 2% |

Transitional and Independent Living Measures



- **Programs serving youth under the age of 18 years** will receive a standard CCI scorecard and a TLP scorecard.
- **Programs exclusively serving youth over the age of 18 years** will receive an IL scorecard and an abbreviated CCI scorecard for measures applicable to youth over the age of 18 years.

Current TLP /ILP Programs



- Chris Kids – Summit Trail Girls & Boys
- Devereux Project Plus
- Turning Point ILP
- Little Debbie's 2nd Chance ILP (I & II)
- Center for Children & Young Adults – Life Works & Life Works Prep
- UMCH – ILP

- Elks Aidmore
- Families First
- Tapestry Youth Ministries – Teen Parent Program
- Methodist Home for Children & Youth - Arabella
- Raintree Village
- Gwinnett Children's Shelter
- O'Gilvie Carrington

Transitional and Independent Living Measures



| Measures | Weight |
|--|--------|
| Academic/Career Development –percent of youth attend an educational program or employed at least 20 hours a week. | 25% |
| Use of Ansell Casey Life Skills Assessment —percent of youth with ACLSA completed at age 16 years, 17 ½ and annually at age 18 through 21 years. If DFCS completes the ACLA, the provider may obtain a copy as proof of completion. | 25% |
| Financial Independence —percent of youth enrolled in the Individual Development Account program, attend financial literacy class and maintain IDA with minimum \$5 monthly contribution. | 15% |
| Positive Permanency Connections —percent of emancipating (with APPLA goal) or emancipated youth with signed “Permanency Pact” or agreements with a caring adult. | 25% |
| Community Connections -percent of youth participating in a community organization or volunteer experience at least 5 hours a quarter. | 10% |

Transitional and Independent Living Bonus Measures



Bonus Measures

| | |
|--|-----------|
| No DJJ or DOC Involvement —percent of youth with no DOC or DJJ involvement OR no additional involvement or probation violations. | Up to 5% |
| Extended Foster Care Services —percent of youth agreeing to extended foster care at 18 years. | Up to 5% |
| Positive Permanency Connections —percent of emancipating (with APPLA goal) or emancipated youth with signed “Permanency Pact” or agreements with three or more caring adults. | Up to 5% |
| High School Graduation or College Participation —percent of youth completing a HS diploma or who pass at least two classes at a college, university, trade or technical school full-time. | Up to 20% |
| Full Time Employment with Medical Benefits —percent of discharged youth who have a full time job with medical benefits. | Up to 20% |



Questions??

Other GA + Score Documentation



Non-RBWO Placements



Roster for Non-RBWO Placement Listed in GA + Score

- **First Initial**
- **Last Initial**
- **Date of Birth**
- **Date of Admission**
- **Placement Type**
- **Discharge Date**



RBWO Referrals Information



- **Name**
- **Date of Birth**
- **Gender**
- **Race**
- **County**
- **DFCS Contact Information**
- **Referral Date**
- **Presenting Issue**
- **Disposition**
- **Reason for Disposition**



Significant Events

Serious events relating to the care or protection of children.

- Staff-Child Physical Confrontation
- Serious Injury
- CPS Investigation Initiated
- Death
- Police Intervention
- Media Coverage
- ER Visit or Other Hospitalization; Injuries requiring more than First Aid
- Suicide / Homicidal Attempt
- Impact from Natural Disaster or Fire, Flood...
- Emergency Safety Intervention
 - ✦ 3 or more times in one month with the same child and/or more than 10 emergency safety interventions for all children in care within a 30-day period.
- Other

Significant Events Reporting



- **EVENT DATE**
- **EVENT TYPE**
- **NARRATIVE**
- **CHILD INVOLVED**
- **STAFF / CAREGIVER INVOLVED**
- **PROVIDER RESPONSE/ACTION**
- **OTHER COMMENTS**



Questions??